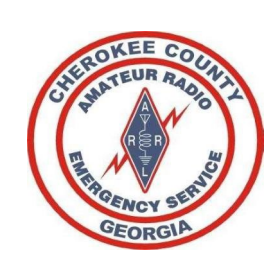




Cherokee County ARES & RACES Orientation

31 January 2022



References

- [Cherokee County ARES Operations Manual](#)
- [ARRL ARES – Field Resource Manual](#)
- [Field Operating Guides, including AUXFOG](#)



Welcome

Welcome to the Cherokee County, Georgia Amateur Radio Emergency Service®

- While amateur radio is a hobby, we encourage you to participate in our weekly nets, various drills/exercises throughout the year, and be prepared to answer the call from our community when emergency communications are needed.
- We are NOT storm-chasers, nor are we First-Responders.
- We are a dedicated group of amateur radio operators that follow the chain of command.
- We deploy only when requested by our served agency, and only when approved by your Emergency Coordinator of Cherokee County, or one of the delegated Assistant Emergency Coordinators.
- We encourage you to participate and give back to your community and remain prepared to answer the call to service when requested.



Mission

Cherokee County ARES supports our primary served agency, Cherokee County EMA- Emergency Management Agency and when requested other agencies in our area or NW GA District.

We annually support the following activities:

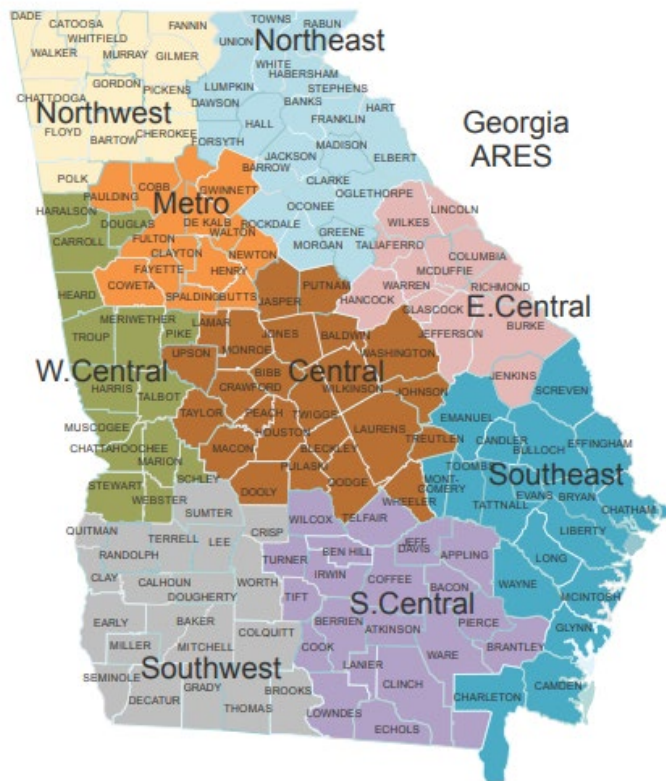
1. [Field Day along with our Club-WX4CAR.ORG](http://Club-WX4CAR.ORG)
2. [The Georgia Death Race](#)
3. [The Georgia Jewel](#)
4. [NW GA District ARES](#)
5. **The Annual ARRL Simulated Emergency Test (SET)**
6. As needed [SKYWARN](#) nets



ARES Organization

The American Radio Relay League's Amateur Radio Emergency Service is divided into four levels, national, section, district and local.

- There are 71 sections in the USA.
- The Georgia section is broken into 8 districts that are illustrated below
- Our group is part of the Georgia Section, Northwest District.
- Each of Georgia's 159 counties has an Emergency Coordinator.

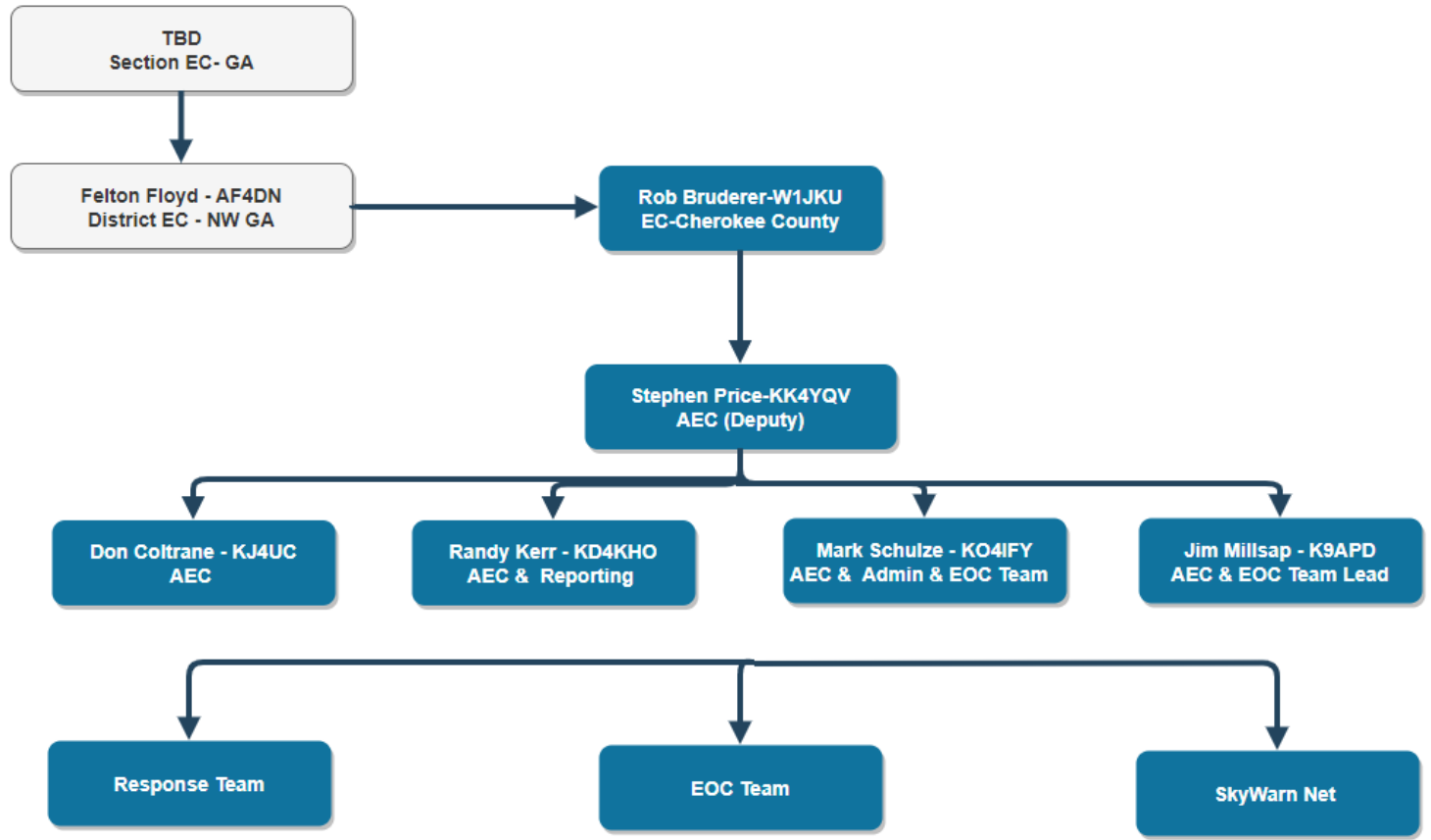


Georgia Section Northwest District

Bartow
Catoosa
Chattooga
Cherokee
Dade
Fannin
Floyd
Gilmer
Gordon
Murray
Pickens
Polk
Walker
Whitfield



Cherokee County GA Organization



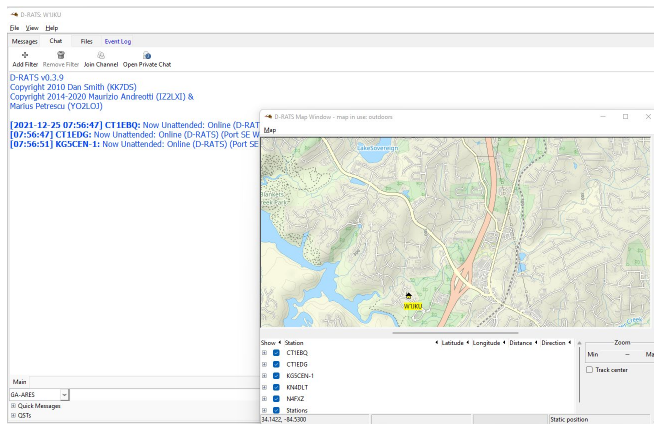
Daniel Westbrook
Director EMA

Rebecah Green
Deputy Director EMA

Lake Arrowhead Cert Team
Bob Johnston - KK4LAC



Training



General Message (ICS 213)					
		Load ICS213 INITIAL Data	Form Instructions		
1. Incident Name:	<input type="text" value="Incident name is optional"/>				
2. To (Name/Position):	<input type="text"/>				
3. From (Name/Position):	<input type="text"/>				
4. Subject:	<input type="text"/>	5. Date:	<input type="text"/>	6. Time:	<input type="text"/>
7. Message:	<div style="border: 1px solid gray; padding: 5px; min-height: 100px;">Be Brief and Concise</div>				
8. Approved by:	<input type="text"/>	Position / Title:	<input type="text"/>		
Save ICS213 INITIAL Data		Submit	Reset Form	Ver 41.11	



ARES LEVELS

- **Level 1 ARES**
- **Level 2 ARES** (Deployable)
- **Level 3 ARES** (EC, AEC, and EMA Staff)
- All ARES members are expected to establish and complete ARES Training as outlined in the [ARRL ARES Standardized Training Task Book](#). These tasks cover basic activities/principles that you as a radio operator must become proficient in performing.
- (No Worries, We will help you gain the experience you need!)



FEMA Training

- Our operations must comply with the National Incident Management System (NIMS). We operate under the Incident Command System (ICS) when activated.
- The Department of Homeland Security (DHS) requires all volunteers, including Amateur Radio operators to be certificated in at least IS 100, IS 200, IS 700 and IS 800 course material.
- For non-governmental employees and others without access to classroom instruction, these courses are available as on-line independent-study courses that are free of charge.
- **Required for ARES Level II**
The required FEMA training (as well as a lot of other optional training) is available on-line at the following web site: <http://training.fema.gov/is/crslist.aspx>.

IS-100, Introduction to the Incident Command System

IS-200, ICS for Single Resources and Initial Action Incidents

IS-700, National Incident Management System (NIMS), An Introduction

IS-800, National Response Framework, An Introduction



ARES Commitment

To Remain in an “Active” Status in Cherokee ARES, requires a small commitment from you.

Our Served Agency must have confidence we are prepared to support our community when called upon.

Requirements:

- Attends minimum of 2 Monday Night Cherokee ARES/SKYWARN Nets per Quarter
- Attends minimum of 2 Tuesday Night NW GA District ARES Nets per Quarter
- Attends minimum of 1 Drill/ARES Exercise per year. (Field-Day, GA Death Race, GA Jewel, GA SET, or Real-World Activation)

****** Preference is for you to attend as many of these exercises that you can, but we understand you must balance your personal life as well...***



Net Communications

Ground Rules for participating during a Directed / Formal Net:

- During a Directed Net, Only use the frequency for official traffic
- ***LISTEN***. The **Net Control Station** (NCS) will provide instructions on how to check into the net and what is expected during net activities
- Follow the net protocol established by the NCS
- Report in to the NCS promptly when you arrive at your station
- If you need to talk to someone directly, ask the NCS for permission
- Answer promptly when called by the NCS
- If you leave your station during a Directed Net, Inform NCS
- Do not utilize Q-Signals, 10 Codes, etc. speak normally in clear language. For Example, do not use *QSL* to Acknowledge a message, instead use the word, '**Acknowledge-Over**'. This is important as we will be working with many different Served Agencies and the communications must be fully understood by all parties. (Including National Weather Service, MARS, American Red Cross, Georgia Emergency Management Agency, Local County and City agencies, etc.)



Common Prowords

Below is a list of Common Prowords we shall utilize. Emergency Communications requires clearly spoken language to avoid any confusion or miss-interpretation of meaning:

- **CORRECT / WRONG.** The proword **CORRECT** means "what you transmitted is correct". The opposite is **WRONG**.
- **NEGATIVE / AFFIRMATIVE.** The proword **NEGATIVE** means "No". The Opposite "**AFFIRMATIVE**" meaning "Yes".
- **SAY AGAIN.** The proword **SAY AGAIN** is used to request a repetition of something that was transmitted. The Proword **I SAY AGAIN** means I am about to restate something I have already transmitted.
- **WAIT and WAITOUT.** The proword **WAIT** is used when a pause is required and will last less than five seconds. Wait should not be over-used; you may simply pause a second or two without saying it. **WAIT OUT** means I must pause for longer than five seconds before continuing/responding, in the meantime other stations can transmit as normal.
- **WILCO.** The proword **WILCO** is a contraction of the phrase "will comply". It is used in response to a request or tasking and means that you understand the tasking and agree to accomplish the task. Because it implies you understand the request, it is never used with the proword **ROGER** as that would be redundant.
- **OVER.** The proword **OVER** means, I have finished my transmission, go ahead and transmit.
- **OUT.** The proword **OUT** means, I have concluded my transmission, no reply is expected.
- **ROGER.** The proword **ROGER** means, "I have received the information by you" without indicating approval or disapproval, agreement or disagreement. Do not confuse **ROGER** for **WILCO**.
- **THIS IS.** The proword **THIS IS** means, "The current transmission is from the station who's call sign follows." This proword can be omitted after communications are established.
- **THIS IS A DIRECTED NET.** This proword **THIS IS A DIRECTED NET**, spoken by NET Control, means that until further notice the NET is directed. This means that all stations need permission of NET CONTROL to call other stations. The Opposite is **FREE NET**. In a FREE NET, any station may call any other station without NCS Permission.



Passing Formal Traffic

- During an emergency, precise message handling is critical. It is important to record and pass on messages quickly and accurately
- Keep Transmissions to a minimum.
- Avoid Spreading Rumours – Don't expand or speculate on what you may hear on the air or while in the presence of officials.
- All “official messages” should be written and signed by the originator.
- Send formal traffic EXACTLY as you received it. Don't correct it, change it, elaborate, or try to interpret it. Ask for clarification before Sending
- Copy it as you received it. Send it as you were requested.
- Use the right mode and band to suit the need.



Weekly Training NETS

- We are fortunate to have various local, state, and regional weekly nets available to our teams.
- To help prioritize the nets for the Cherokee ARES teams, we are requesting that we participate, as time allows, on the Cherokee ARES, Cherokee CARS, and NW GA ARES weekly nets.
- By keeping focus on our County and District we are better able to mutually support one another during an activation or incident.

Monday

Cherokee ARES /SKYWARN

- 20:00 hours Net starts on UHAM41 WA4EOC Repeater (443.075 + PL 107.2) and Alternate Repeater KG4VUB (145.270 - PL 100.0)

Tuesday

[NW GA ARES DISTRICT](#)

- 1st Tuesday 19:30 District Simplex Net (Check [NW GA ARES District Facebook](#) weekly)
- 19:30 Winlink Net – Send Winlink Check-in form to W4NWX
- 20:00 hours Net starts on VHAM13 KC4AQS Repeater 146.805 + PL 100.0 (Additional Instructions will be provided on the net or [NW GA ARES District Facebook](#))
- Exercises varies including:
 - DSTAR using REF030B
 - Winlink (Telnet/Vara/Packet) to W4NWX
 - Winlink P2P- TBD
 - Simplex Testing VHF/UHF/HF- Based on weekly exercise
 - DRATS

Thursday

Cherokee Amateur Radio Society Club Net ([WX4CAR](#))

- 20:00 EST via VHAM11 the KG4VUB Repeater (145.270MHz - PL 100Hz encode and decode)



Activation

Point Bravo- 60 South from Blue Ridge





Activation of Cherokee ARES

- CC-ARES activations for the EOC are initiated by the EOC Staff by notifying the EC or designated AEC(s). An email is sent via e-mail distribution using [Cherokee ARES Groups.IO](http://CherokeeARESGroups.IO)
- Typical activation will be through the emergency net on the designated repeaters.
 - CC-ARES members should monitor UHAM41/VHAM11 during severe weather or local major events for the standup of SKYWARN or Informal nets.
 - If capable also monitor VHAM13 for reporting requests and real-time information provided from National Weather Center out of Peachtree City GA.
- Email notification to Cherokee ARES members and teams will attempted to be sent through the [Cherokee ARES Groups.IO](http://CherokeeARESGroups.IO) by the EC or AEC(s).
- Last mile, if required, voice-calls and or test messages sent to your cell phone on file with Cherokee ARES will be used.



Activation Procedures

1. Establish an ICS-214 Activity Log. Record your activation date/time, any major significant event that occurs, and when mission is over, record the deactivation date/time.
2. If instructed by your chain of command to deploy, report your departure to the mobilization site and arrival. On demobilization, record the time you leave the area and report to your home station.
 - This is important for accountability.
 - Report these major milestones to your leadership via Voice, Text, Email, any method you can for near real-time tracking.
3. Follow the deployment and demobilization instructions you are provided.
4. Upon completing the mission, develop an After-Action Report.
 - Identifying areas to Improve as well as Sustain.
 - We must take advantage of every opportunity to identify areas to improve before next activation.
 - Submit that report to your Emergency Coordinator and team leader if assigned.



SKYWARN





SKYWARN

- The majority of SKYWARN activity in the State of Georgia is coordinated through the NWS Peachtree City (NWS-PTC) office in Peachtree City.
- The amateur station **WX4PTC** is located at the National Weather Service office in Peachtree City, GA.
- You will find during severe weather, **WX4PTC** may link to one of our local Repeaters VHAM13 and/or VHAM18.
- When this occurs listen carefully to the information **WX4PTC** is broadcasting or requesting, while also monitoring our local Cherokee County SKYWARN net.
- Do Not interrupt a SKYWARN net on VHAM13/VHAM18 or provide information that does not meet the criteria that WX4PTC is requesting. Follow the guidance of Net Control. Many times, just listening is all you need to do and then share on our own Cherokee ARES SKYWARN net.
- WX4PTC is looking for critical ground truth to overlay with additional reports or radar indicated activity, in order to adjust the National Weather Service alerts for the affected area.



Frequencies

The screenshot shows a radio software interface with a dark theme. At the top center, the frequency "443.075.000" is displayed in large white digits, with "FM" in a small box above it. To the left of the frequency are controls for VFO A, MEM, A=B, M>V, VFO B, MW, A<>B, and M-CH. To the right are controls for ATU, NR, TX, VOX, Mode: FM, Comp, Notch, Tone, VSC, Data, Lock, Power, Tune, Filter: FL1, AGC: Fast, ATT: Off, Pre-Amp: 1, Man, Split, V-all, NB, TSQ, V-rx, and VSQL. Below the frequency display is a horizontal frequency scale for the 160m - 10m (Region 1) band, with a date of Saturday, December 25, 2021, and a time of 07:51:35. The scale has major tick marks every 0.2 MHz and minor tick marks every 0.02 MHz. Below the scale are buttons for band widths: 160m, 80m, 60m, 40m, 30m, 20m, 17m, 15m, 12m, and 10m. At the bottom of the interface are several sliders for various settings: AF gain: 49, RF gain: 100, Filter width: 0, F shift: 0, NR level: 28, RF power: 100, PBT inside: 0, PBT outside: 0, Monitor gain: 40, Notch: 0, and Squelch: 19. On the right side of the interface, there is a vertical sidebar with a list of icons and a red box highlighting the 18m icon.



Frequencies

- It is requested that you load the frequencies contained in our ICS-217 Communications Availability Worksheet in your radio, prior to an incident/activation, so that you are prepared at time of activation.
- We have various code-plugs available for download, or we can assist you, if necessary, load your radio.
- The ICS-217 has frequencies for Cherokee ARES (UHF, VHF), GA ARES HF, WINLINK, and NW GA District and Surrounding Counties.
 - Your Primary Channel for Cherokee County ARES are UHAM41
 - Your Alternate Channel for Cherokee County ARES is VHAM11.
 - The remaining Channels will be used as needed .



Computer Applications

1. Winlink. Winlink is used to send emails and various forms between Ham Operators. All ARES members are requested to install and configure Winlink, as a minimum using “Telnet”/Internet to send and receive messages.
 - If you can connect your computer to your radio (Advanced Task), then you can send and receive important messages without any dependence of the internet. This will become a valuable method of communicating when we have an internet disruption or if you are deployed to a location with no Internet/Cell service. (AKA one of our annual events in the mountains of North Georgia).
2. D-RATS. D-RATS is a tool for real-time Instant Messaging between Ham Operators. All ARES members are requested to install and configure Winlink, as a minimum using “Telnet”/Internet to send and receive messages. There is an Advanced Task where if you have a DSTAR Radio or TNC, you can send/receive D-RATS messages without the reliance of the Internet.
3. FLDIGI. FLDIGI is a tool typically used for HF real-time Instant Messaging and sending/receiving various ICS forms between Ham Operators. This relies totally on the ability to send/receive message by linking your Computer to your Radio, where all messages are sent via RF.

Additional Details and training links will be found on the Cherokee-ARES.ORG webpage



RACES- the Radio Amateur Civil Emergency Service

- Founded in 1952, the Radio Amateur Civil Emergency Service (RACES) is a public service provided by a reserve (volunteer) communications unit within government agencies in times of extraordinary need. During periods of RACES activation, certified unpaid personnel are called upon to perform many tasks for the government agencies they serve. Although the exact nature of each activation will be different, the common thread is communications.
- RACES, almost never starts before an emergency and is active only **during the emergency and during the immediate aftermath if government emergency management offices need communications support**. RACES is normally shut down shortly after the emergency has cleared.
- In the event that the President invokes his War Emergency Powers, amateurs involved with RACES might be limited to certain specific frequencies (while all other amateur operation could be silenced).
- RACES Operators must be registered with the local emergency management agency



ARES and RACES Comparison



ARES	ARES	RACES
Activation	Operations can take place in advance of an emergency, during the emergency, and an indefinite time after the emergency has cleared.	Except for drills, starts as a result of an emergency, active during the emergency, and deactivated shortly after the emergency has cleared.
Operator Registration	Does not have to be registered. Suggested to register with local ARES Emergency Coordinator.	Must be registered with the local emergency management agency.
Communications	Limited only by standard Amateur Radio rules.	Restricted to/from other RACES stations.
Messages	Limited only by standard Amateur Radio rules. Example: Health and Welfare would be allowed in ARES, but may not be allowed in RACES.	Communications must be specifically authorized by the civil defense organization for the area served. Generally limited to public safety, immediate safety of life of individuals, the immediate protection of property, maintenance of law and order, alleviation of human suffering and need.
Drills	Limited only by standard Amateur Radio rules.	Cannot exceed a total time of one hour per week. With proper authorization, drills may be conducted twice in a calendar year for a period not to exceed 72 hours.
Served Agencies	Emergency management organizations as well as other non-profit organizations.	Limited to emergency management organizations.
Restricted Operations	May be restricted from operating in some communication emergencies.	May be allowed to operate in a communication emergency when other amateur radio stations are restricted from doing so.



Reminder to Register

- Submit your FSD-98 and RACES to Register Form for Cherokee to **W1JKU and KO4IFY**
- Submit your Certificates of Training to **W1JKU and KO4IFY**
- On Monthly Basis, Sign the ARES Sign-in Roster at our Meetings and verify your Contact Information is correct



Cherokee County
Amateur Radio Emergency Service@
ARES Registration Form



Name:	
Call Sign:	
Mailing Address:	
City, State, ZIP code:	
Grid Square:	
E-mail address:	
Home phone number:	
Work phone number:	
Ham Shack Hotline:	
Cell phone number:	
License Class:	
License Expiration:	

MODE	80M	40M	20M	10M	6M	2M	1.25M	.70CM	900Mhz	1.2 Ghz
SSB										
CW										
FM										
DATA										
PACKET										
Winlink										
D-Star										
"Go Box"										
Portable HT										
Mobile										
Home										

Can your home station be operated without commercial power? Yes [] No []
 May we include your contact information in our membership listings? Yes [] No []

Signature _____ Date _____
 (Your typed name will serve as signature)

Contact: Rob Bruderer, Emergency Coordinator-Cherokee County ARES at W1JKU@ARRL.NET
 Information on this document will not be released to anyone without your permission as indicated above.
 Learn about ARRL-sponsored Amateur Radio Emergency Communications Courses:
<http://www.arrl.org/cc/>
 CC ARES FSD-98 (01/2022)



Cherokee County
RACES Registration Form
"Amateur Radio Volunteers for Community Emergency Communications Service"

Name:	
Call Sign:	
Mailing Address:	
City, State, ZIP code:	
Grid Square:	
E-mail address:	
Home phone number:	
Work phone number:	
Ham Shack Hotline:	
Cell phone number:	
License Class:	
License Expiration:	

MODE	80M	40M	20M	10M	6M	2M	1.25M	.70CM	900Mhz	1.2 Ghz
SSB										
CW										
FM										
DATA										
PACKET										
Winlink										
Telnet										
Winlink										
VARA										
PACTOR										
FLDIGI										

Can your home station be operated without commercial power? Yes [] No []

Signature _____ Date _____
 (Your typed name will serve as signature)

Contact: Rob Bruderer, Emergency Coordinator-Cherokee County ARES at W1JKU@ARRL.NET
 CC RACES (01/2022)



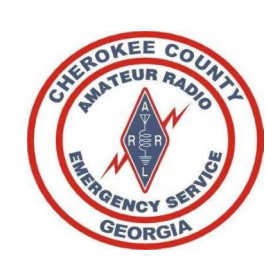
After Registration

1. You will be added to the [Cherokee ARES Groups.IO](#)
 - Please follow the steps in the email you receive to accept the invitation, and please set your name in Groups.IO as Firstname + Callsign
 - This specific page is limited for Cherokee ARES training, Activations, and Upcoming ARES Events.
 - For Non-ARES related postings use the WX4CAR Club Groups.IO Page [Cherokee-Hams.groups.io](#)
2. You can then request access to the [Cherokee ARES Facebook Page](#), which for short message/reminders. Only ARES members will be admitted to the page. (Facebook is not mandatory, just another tool in the toolbox to help notify members)
3. Please access and make a favorite on your web-browser: the [Cherokee ARES Website](#) . This is the official site for complete listing of our Operations Manual and important details of our Organization.
 - Please Establish your own Binder that includes the Cherokee ARES Operations Manual
 - Please Print 10 Copies of each of the Blank ICS Forms, so you have them available during an incident
 - Please Check the website at least quarterly for updates. (If we make a major update to this site, we will post a notification on the Cherokee ARES Groups.IO page as a reminder).
4. Participate in Weekly NETS and Exercises



EC and AEC Contact Information

Position	Name	Call Sign	Email:
EC	Rob Bruderer	W1JKU	w1jku@arrl.net
AEC (Deputy)	Stephen Price	KK4YQV	kk4yqv@gmail.com
AEC (Admin/Registrations)	Mark Schulze	KO4IFY	ko4ify@arrl.net
AEC (Reporting)	Randy Kerr	KD4KHO	kd4kho@comcast.net
AEC (EOC)	Jim Millsap	K9APD	k9apd@comcast.net
AEC	Don Coletrane	KJ4UC	donniec52@gmail.com



Participate

Give Back to the Community

Have Fun and Advance your Skills



Thank you!